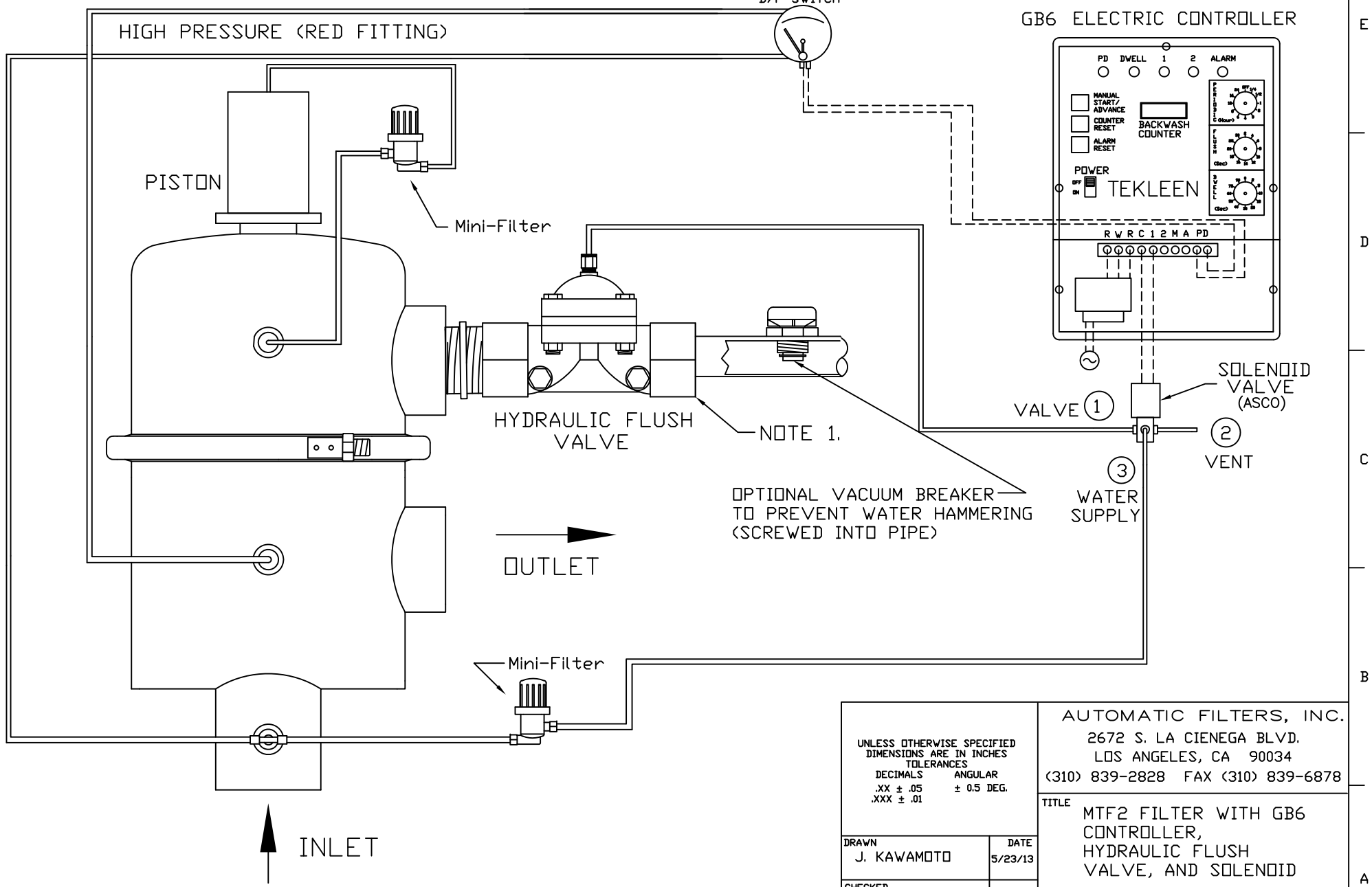


1 2 3 4 5 6 7 8

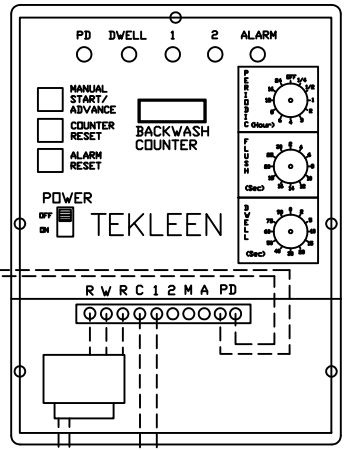
REVISIONS				
REV	ZONE	DESCRIPTION	DATE	APPROVED
1	1A	ADDED NOTE 1 REGARDING UNION.	06/25/13	S.P.

LOW PRESSURE (BLUE FITTING)

HIGH PRESSURE (RED FITTING)



GB6 ELECTRIC CONTROLLER



HYDRAULIC FLUSH VALVE

NOTE 1.

OPTIONAL VACUUM BREAKER
TO PREVENT WATER HAMMERING
(SCREWED INTO PIPE)

OUTLET

VALVE ①
③ WATER SUPPLY

SOLENOID VALVE (ASCO)
② VENT

INLET

NOTES:
1. IT IS RECOMMENDED THAT A UNION BE INSTALLED BETWEEN THE FLUSH VALVE AND FLUSH LINE FOR EASE OF MAINTENANCE.

UNLESS OTHERWISE SPECIFIED DIMENSIONS ARE IN INCHES TOLERANCES		AUTOMATIC FILTERS, INC.	
DECIMALS ANGULAR		2672 S. LA CIENEGA BLVD.	
.XX ± .05 ± 0.5 DEG.		LOS ANGELES, CA 90034	
.XXX ± .01		(310) 839-2828 FAX (310) 839-6878	
DRAWN J. KAWAMOTO		TITLE MTF2 FILTER WITH GB6 CONTROLLER, HYDRAULIC FLUSH VALVE, AND SOLENOID	
DATE 5/23/13		SIZE DWG NO. REV	
CHECKED		A WIRE-MTFGB6-HFV-SOL-LAY-01 1	
DESIGN		NOT SCALE SHEET 1 OF 1	