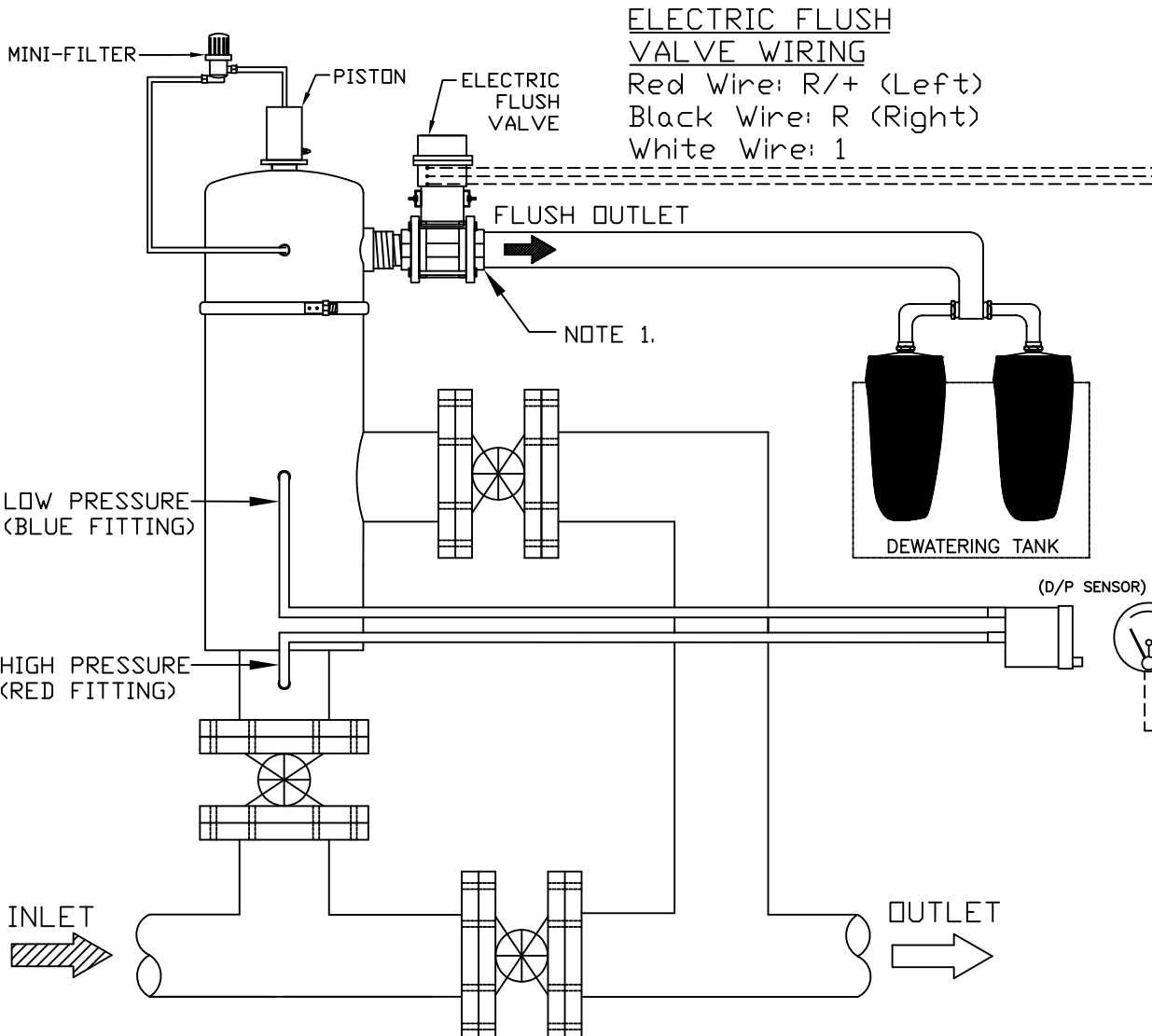


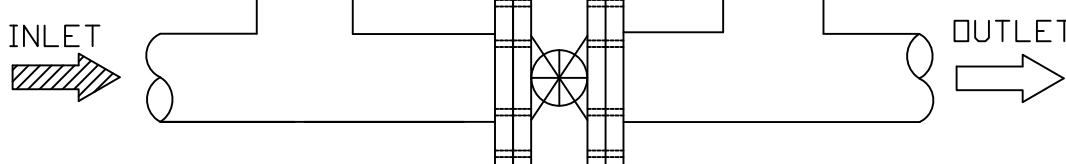
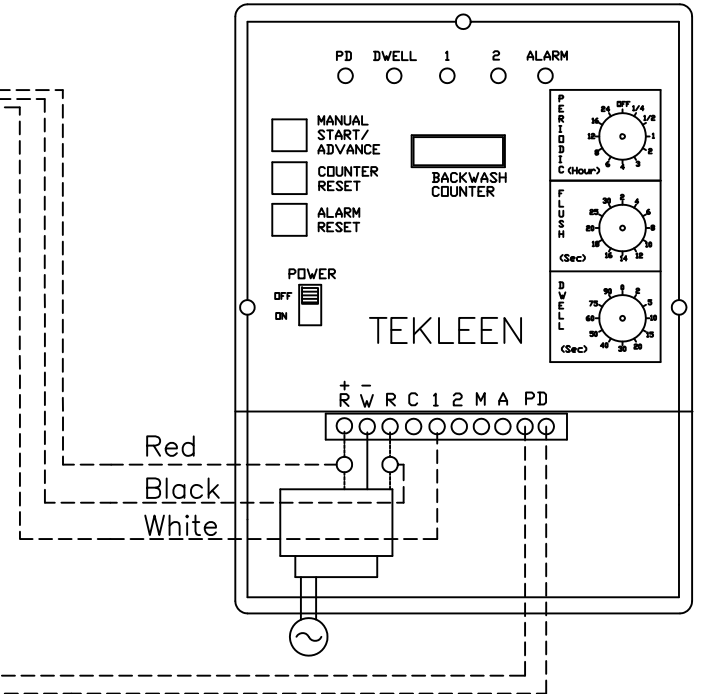
NOTES:
 1. IT IS RECOMMENDED THAT A UNION BE INSTALLED BETWEEN THE FLUSH VALVE AND FLUSH LINE FOR EASE OF MAINTENANCE.

| REVISIONS | | | | |
|-----------|------|-------------|------|----------|
| REV | ZONE | DESCRIPTION | DATE | APPROVED |
| | | | | |



ELECTRIC FLUSH VALVE WIRING
 Red Wire: R/+ (Left)
 Black Wire: R (Right)
 White Wire: 1

GB6 ELECTRIC CONTROLLER



| | |
|-----------------------|-------|
| Junction | ○ |
| No Junction | ∪ |
| Hydraulic Connection | ==== |
| Electrical Connection | ----- |

| | |
|--|------------|
| UNLESS OTHERWISE SPECIFIED DIMENSIONS ARE IN INCHES TOLERANCES | |
| DECIMALS | ANGULAR |
| .XX ± .05 | ± 0.5 DEG. |
| .XXX ± .01 | |
| DRAWN | DATE |
| M. SERRANO | 04/17/15 |
| CHECKED | |
| DESIGN FOR: | |

| | | |
|---|------------------------|--------------|
| AUTOMATIC FILTERS, INC. | | |
| 2672 S. LA CIENEGA BLVD. | | |
| LOS ANGELES, CA 90034 | | |
| (310) 839-2828 FAX (310) 839-6878 | | |
| TITLE | | |
| MTF INSTALLATION LAYOUT WITH ELECTRIC FLUSH VALVE & DEWATERING SYSTEM | | |
| SIZE | DWG NO. | REV |
| A | WIRE-MTFGB6-EFV-LAY-17 | N/A |
| NOT TO SCALE | | SHEET 1 OF 1 |