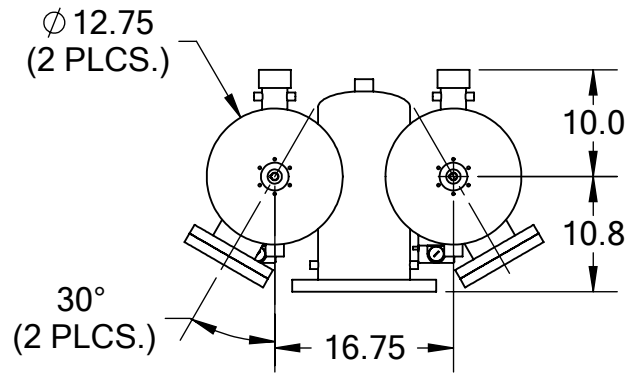
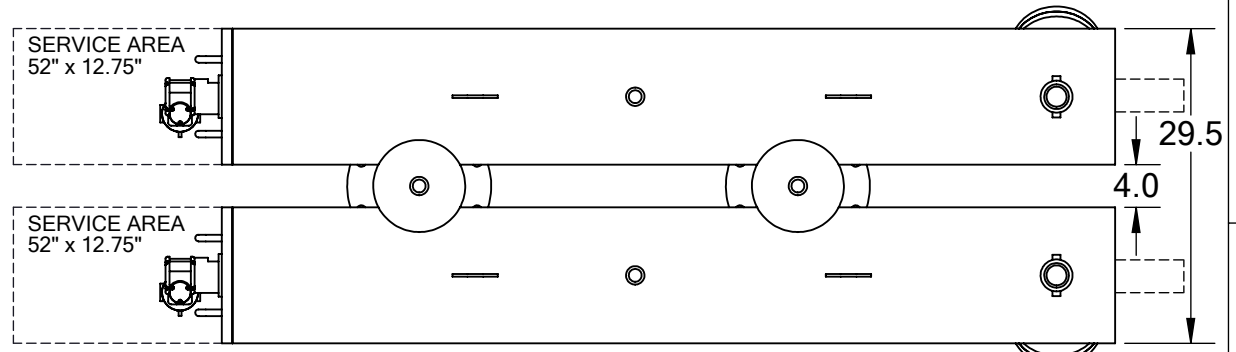


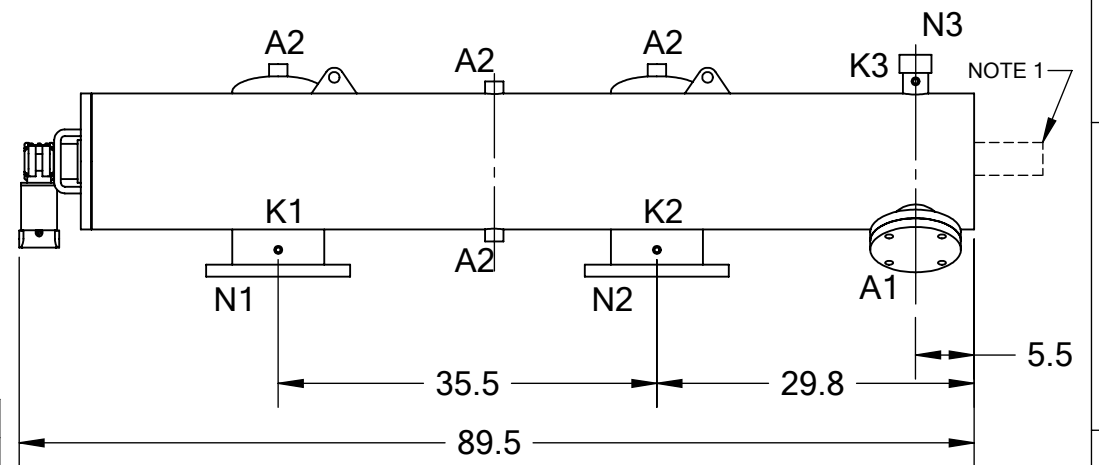
FRONT VIEW



BACK VIEW



TOP VIEW



SIDE VIEW


REVISIONS				
REV.	ZONE	DESCRIPTION	DATE	INITIAL

TECHNICAL DATA

FLOW RATE	MAX. 2,500 GPM (568 m ³ /hr)
SCREEN SIZE	--- MICRON
SCREEN AREA	16.0 SQ. FT. (2 x 8.0 SQ. FT.)
DESIGN TEMPERATURE	160 °F
DESIGN PRESSURE	150 PSI
EMPTY WEIGHT	~1,000 LBS.
FULL WEIGHT	~1,800 LBS.

NOTES:

- PLEASE ALLOW ~20" ADDITIONAL TO INSTALL AND REMOVE THE PISTON ASSEMBLY TO THE BACKSIDE OF THE FILTER (2 PLCS.).

NOZZLE	CONNECTION	TYPE	SIZE	RATING	TOLERANCES (UNLESS OTHERWISE SPECIFIED)	 TEKLEEN <i>Automatic Filters Inc.</i> 2672 S. LA CIENEGA BLVD. LOS ANGELES, CA 90034 MAIN: (310) 839-2828 FAX: (310) 839-6878
A1	SERVICE PORT	FLANGED	3.5" ASA	CL. #150 F.F. w/ Blind		
A2	PRESSURE RELEASE	THREADED	1" NPT(6)		ANGLE ±1°	
K1	HIGH PRESSURE CONN.	THREADED	1/4" NPT(2)		.X ±.1	MATERIAL: SST
K2	LOW PRESSURE CONN.	THREADED	1/4" NPT(2)		.XX ±.05	
K3	HYDRAULIC CONN.	THREADED	1/4" NPT(4)		.XXX ±.010	TITLE: LPF8-TLP FILTER, CUT DRAWING
N1	INLET	FLANGED	8" ASA	CLASS #150 F.F.S.O.	DRAWN BY: R.LAM	
N2	OUTLET	FLANGED	8" ASA	CLASS #150 F.F.S.O.	DATE: 08/09/17	DRAWING NUMBER REV LPF-8TLP-CUT-01 N/A
N3	FLUSH OUTLET	THREADED	2" NPT(2)		SCALE: 1:18 SHEET: 1 OF 1	