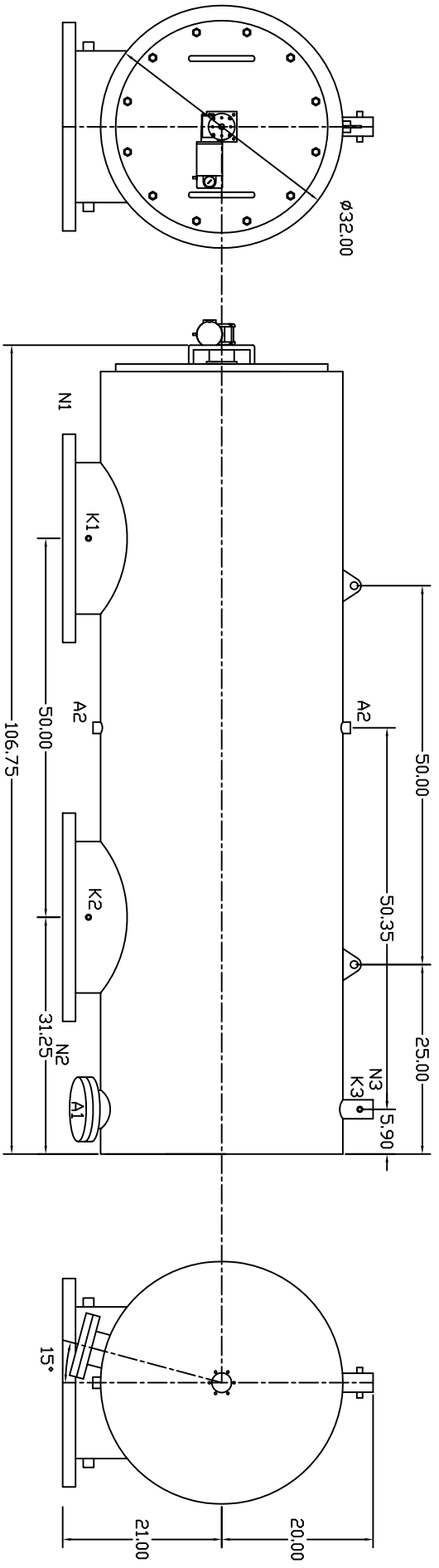


REVISIONS				
ZONE	REV	DESCRIPTION	DATE	APPROVED



TECHNICAL DATA

Flow Rate Max.: 10,000 GPM
 Screen Size --- Micron
 Screen Area 24.0 sq.ft.
 Working Temp. 200 deg. F
 Working Pressure 150 PSI
 Empty Weight 2500 lbs.
 Full Weight ----- lbs.

NOZZLE	CONNECTION	TYPE DF CONNECTION	SIZE	RATING
A1	Service Port	Flanged	4" ASA	150 lbs. F.F. w/Blind
A2	Service Port	Threaded	1" NPT(2)	
K1	Hi. Press. Conn.	Threaded	1/4" NPT(2)	
K2	Low Press. Conn.	Threaded	1/4" NPT(2)	
K3	Flushoutlet Conn.	Threaded	1/4" NPT(2)	
N1	Inlet	Flanged	24" ASA	150 lbs. F.F.
N2	Dutlet	Flanged	24" ASA	150 lbs. F.F.
N3	Flushoutlet	Threaded	2" NPT	

UNLESS OTHERWISE SPECIFIED
 DIMENSIONS ARE IN INCHES
 DECIMALS TOLERANCES ANGULAR
 .XX ± .05 ± 0.5 DEG.
 .XXX ± .01

AUTOMATIC FILTERS, INC.
 2672 S. LA CIENEGA BLVD.
 LOS ANGELES, CA 90034
 (310) 839-2828 FAX (310) 839-6878

TITLE: LPF24-SP

DRAWN: Daniel Stenberg DATE: 5-8-09
 CHECKED: DESIGN

SIZE	DWG. NO.	REV
A	LPF24-SP-2	0

NDT TO SCALE SHEET DF