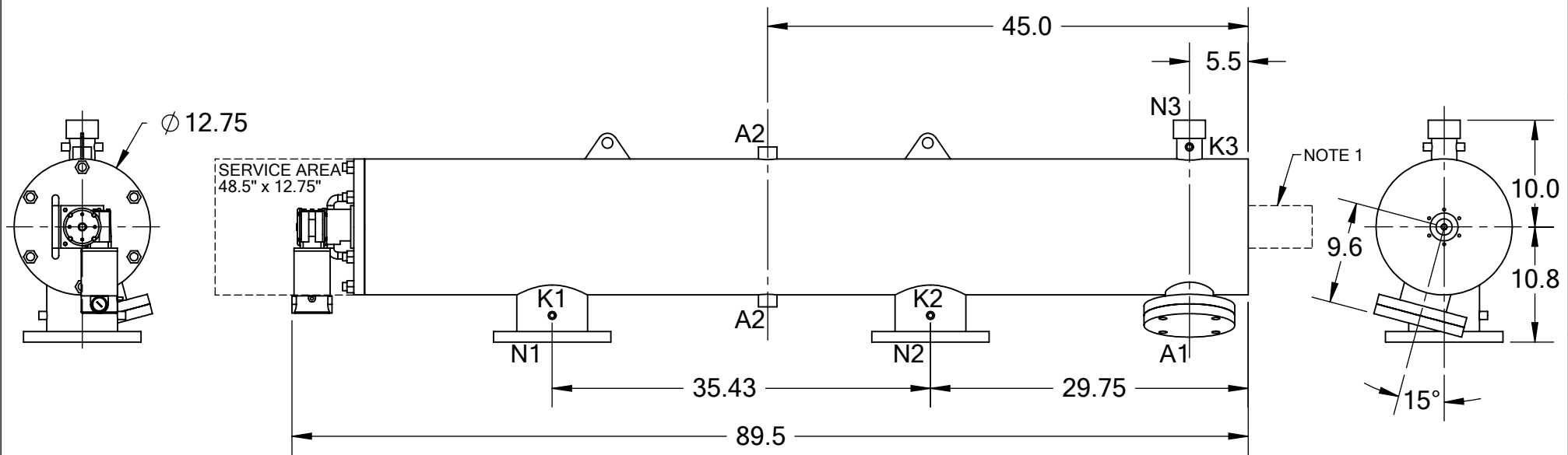


REVISIONS				
REV.	ZONE	DESCRIPTION	DATE	INITIAL
1	7D	ADDED NOTE 1.	04/16/15	M.S.


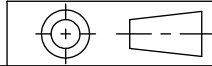


TECHNICAL DATA

FLOW RATE	MAX. 800 GPM (182 m ³ /hr)
SCREEN SIZE	___ MICRON
SCREEN AREA	8.0 SQ. FEET
DESIGN TEMPERATURE	160 °F
DESIGN PRESSURE	150 PSI
EMPTY WEIGHT	~335 LBS.
FULL WEIGHT	~635 LBS.

NOTES:

- PLEASE ALLOW ~20" ADDITIONAL TO INSTALL AND REMOVE THE PISTON ASSEMBLY TO THE BACKSIDE OF THE FILTER.

NOZZLE	CONNECTION	TYPE	SIZE	RATING	TOLERANCES (UNLESS OTHERWISE SPECIFIED)		 TEKLEEN <i>Automatic Filters Inc.</i> 2672 S. LA CIENEGA BLVD. LOS ANGELES, CA 90034 MAIN: (310) 839-2828 FAX: (310) 839-6878																
A1	SERVICE PORT	FLANGED	3.5" ASA	CL. #150 F.F. w/ Blind	FRAC. ±1/16	ANGLE ±1°																	
A2	PRESSURE RELEASE	THREADED	1" NPT(2)		.X ±.1																		
K1	HIGH PRESSURE CONN.	THREADED	1/4" NPT(2)	CLASS #150 F.F.S.O. CLASS #150 F.F.S.O.	.XX ±.05	<table border="1"> <tr> <td>MATERIAL:</td> <td>SST</td> <td>TITLE:</td> <td rowspan="2">LPF6-XLP FILTER, CUT DRAWING</td> </tr> <tr> <td>DATE:</td> <td>04/12/12</td> <td>DRAWING NUMBER</td> <td>REV</td> </tr> <tr> <td>N1</td> <td>INLET</td> <td>FLANGED</td> <td>6" ASA</td> <td>CLASS #150 F.F.S.O.</td> <td>SCALE: 1:14</td> <td>SHEET: 1 OF 1</td> <td>LPF-6XLP-CUT-01</td> <td>1</td> </tr> </table>		MATERIAL:	SST	TITLE:	LPF6-XLP FILTER, CUT DRAWING	DATE:	04/12/12	DRAWING NUMBER	REV	N1	INLET	FLANGED	6" ASA	CLASS #150 F.F.S.O.	SCALE: 1:14	SHEET: 1 OF 1	LPF-6XLP-CUT-01
MATERIAL:	SST	TITLE:	LPF6-XLP FILTER, CUT DRAWING																				
DATE:	04/12/12	DRAWING NUMBER		REV																			
N1	INLET	FLANGED	6" ASA	CLASS #150 F.F.S.O.	SCALE: 1:14	SHEET: 1 OF 1	LPF-6XLP-CUT-01	1															
K2	LOW PRESSURE CONN.	THREADED	1/4" NPT(2)		.XXX ±.010																		
K3	HYDRAULIC CONN.	THREADED	1/4" NPT(2)																				
N1	INLET	FLANGED	6" ASA	CLASS #150 F.F.S.O.																			
N2	OUTLET	FLANGED	6" ASA	CLASS #150 F.F.S.O.																			
N3	FLUSH OUTLET	THREADED	2" NPT																				