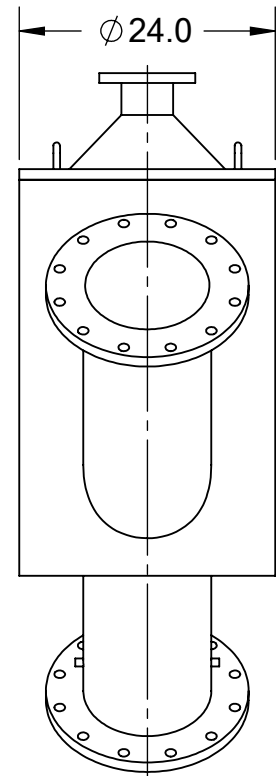
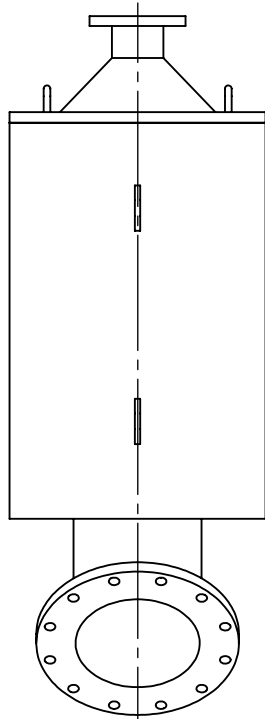


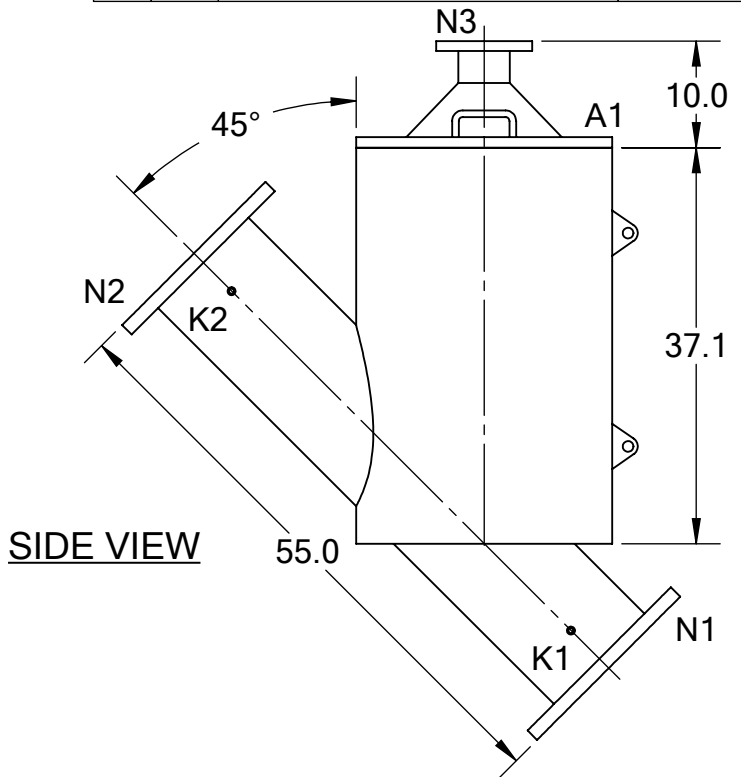
1 2 3 4 5 6 7 8



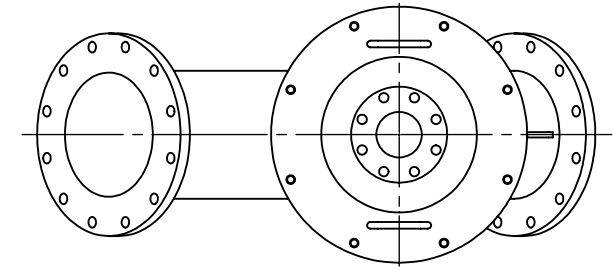
**FRONT VIEW**



**BACK VIEW**



**SIDE VIEW**



**TOP VIEW**

REVISIONS				
REV.	ZONE	DESCRIPTION	DATE	INITIAL

**TECHNICAL DATA**

FLOW RATE	MAX. 6,000 GPM (1,363 m <sup>3</sup> /hr)
SCREEN SIZE	___ MICRON
SCREEN AREA	12.4 SQ. FEET
DESIGN TEMPERATURE	160 °F
DESIGN PRESSURE	100 PSI
EMPTY WEIGHT	~675 LBS.
FULL WEIGHT	~1,650 LBS.

NOZZLE	CONNECTION	TYPE	SIZE	RATING
A1	SERVICE PORT	FLANGED	24"	
K1	HIGH PRESSURE CONN.	THREADED	1/4" NPT(2)	
K2	LOW PRESSURE CONN.	THREADED	1/4" NPT(2)	
N1	INLET	FLANGED	12" ASA	CLASS #150 F.F.S.O.
N2	OUTLET	FLANGED	12" ASA	CLASS #150 F.F.S.O.
N3	FLUSH OUTLET	FLANGED	4" ASA	CLASS #150 F.F.S.O.

**TOLERANCES (UNLESS OTHERWISE SPECIFIED)**

FRAC. ±1/16	ANGLE ±1°
.X ±.1	
.XX ±.05	
.XXX ±.010	

<b>MATERIAL:</b>	SST
<b>DRAWN BY:</b>	M. SERRANO
<b>DATE:</b>	10/08/18
<b>SCALE:</b>	1:18
<b>SHEET:</b>	1 OF 1

**TEKLEEN**  
*Automatic Filters Inc.*  
 2672 S. LA CIENEGA BLVD.  
 LOS ANGELES, CA 90034  
 MAIN: (310) 839-2828  
 FAX: (310) 839-6878

<b>TITLE:</b> CSF12-XL FILTER, CUT DRAWING	
<b>DRAWING NUMBER</b>	<b>REV</b>
CSF-12XL-CUT-01	N/A