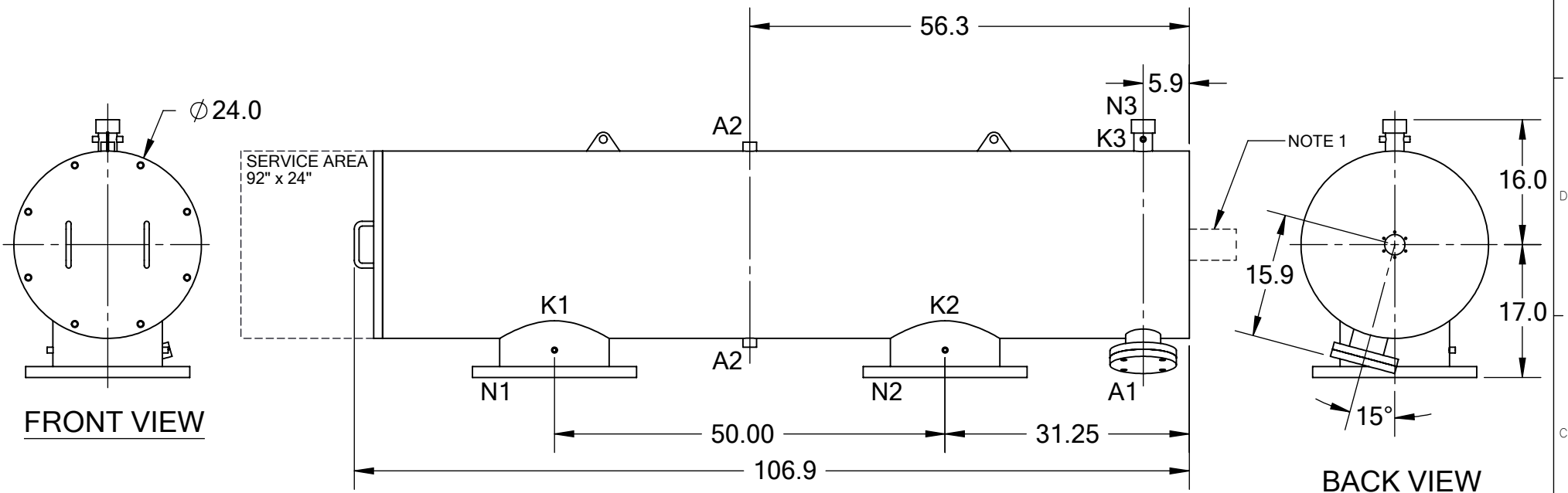


REVISIONS				
REV.	ZONE	DESCRIPTION	DATE	INITIAL
1	ALL	REMOVED FILTER EAR DIMENSIONS, CHANGED WORKING TEMP & PRESSURE TO DESIGN TEMP & PRESSURE	05/01/13	J.K.
2	7D	ADDED NOTE 1.	10/17/14	M.S.



TECHNICAL DATA

FLOW RATE	MAX. 6,000 GPM (1,363 m ³ /hr)
SCREEN SIZE	____ MICRON
SCREEN AREA	16.0 SQ. FEET
DESIGN TEMPERATURE	160 °F
DESIGN PRESSURE	150 PSI
EMPTY WEIGHT	~1,350 LBS.
FULL WEIGHT	~2,050 LBS.

SIDE VIEW

NOTES:

- PLEASE ALLOW ~20" ADDITIONAL TO INSTALL AND REMOVE THE PISTON ASSEMBLY TO THE BACKSIDE OF THE FILTER.

NOZZLE	CONNECTION	TYPE	SIZE	RATING	TOLERANCES (UNLESS OTHERWISE SPECIFIED)		 2672 S. LA CIENEGA BLVD. LOS ANGELES, CA 90034 MAIN: (310) 839-2828 FAX: (310) 839-6878															
A1	SERVICE PORT	FLANGED	3.5" ASA	CL. #150 F.F. w/ Blind	FRAC. ±1/16	ANGLE ±1°																
A2	PRESSURE RELEASE	THREADED	1" NPT(2)		.X ±.1																	
K1	HIGH PRESSURE CONN.	THREADED	1/4" NPT(2)	CLASS #150 F.F.S.O. CLASS #150 F.F.S.O.	.XX ±.05	<table border="1"> <tr> <td>MATERIAL:</td> <td>SST</td> <td>TITLE:</td> <td>ABW14-LP FILTER, CUT DRAWING</td> </tr> <tr> <td>DRAWN BY:</td> <td>S. PERKINSON</td> <td>DRAWING NUMBER</td> <td>ABW-14LP-CUT-01</td> </tr> <tr> <td>DATE:</td> <td>08/18/11</td> <td>REV</td> <td>2</td> </tr> <tr> <td>SCALE:</td> <td>1:19</td> <td>SHEET:</td> <td>1 OF 1</td> </tr> </table>		MATERIAL:	SST	TITLE:	ABW14-LP FILTER, CUT DRAWING	DRAWN BY:	S. PERKINSON	DRAWING NUMBER	ABW-14LP-CUT-01	DATE:	08/18/11	REV	2	SCALE:	1:19	SHEET:
MATERIAL:	SST	TITLE:	ABW14-LP FILTER, CUT DRAWING																			
DRAWN BY:	S. PERKINSON	DRAWING NUMBER	ABW-14LP-CUT-01																			
DATE:	08/18/11	REV	2																			
SCALE:	1:19	SHEET:	1 OF 1																			
K2	LOW PRESSURE CONN.	THREADED	1/4" NPT(2)		.XXX ±.010																	
K3	HYDRAULIC CONN.	THREADED	1/4" NPT(2)																			
N1	INLET	FLANGED	14" ASA																			
N2	OUTLET	FLANGED	14" ASA																			
N3	FLUSH OUTLET	THREADED	2" NPT																			