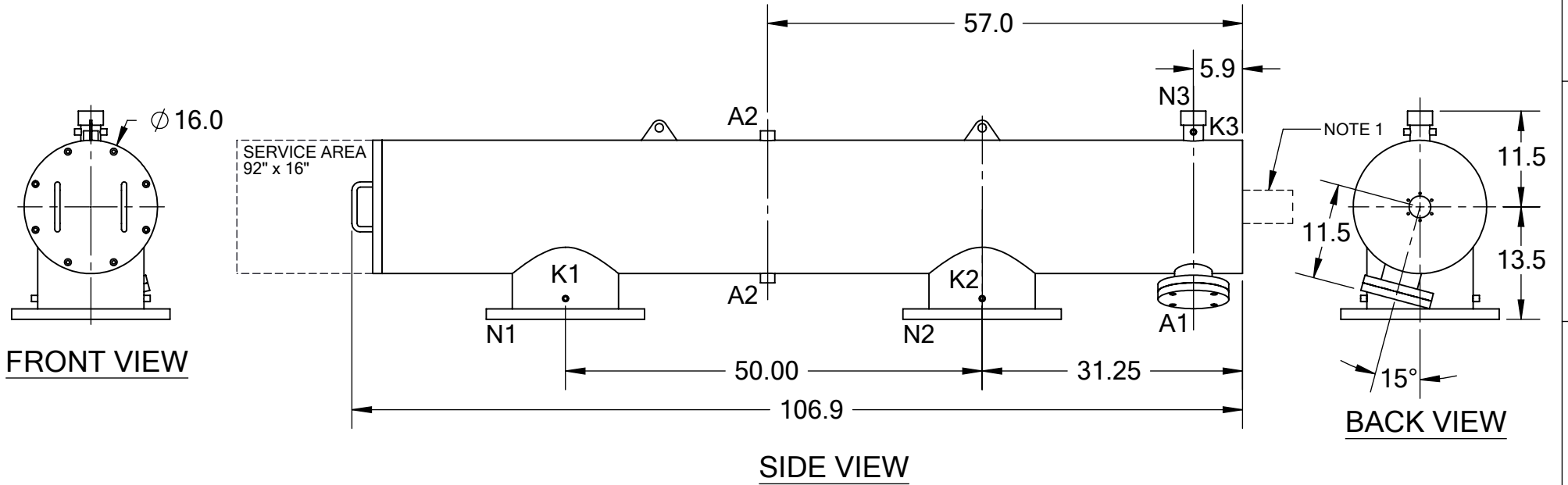


REVISIONS				
REV.	ZONE	DESCRIPTION	DATE	INITIAL
1	1B, 2B	CHANGED "WORKING" TO "DESIGN" & TEMPERATURE FROM 200°F TO 160°F IN TECHNICAL DATA TABLE.	09/27/12	S.P.
2	7D	ADDED NOTE 1.	10/17/14	M.S.



TECHNICAL DATA

FLOW RATE	MAX. 2,630 GPM (597 m <sup>3</sup> /hr)
SCREEN SIZE	____ MICRON
SCREEN AREA	11.0 SQ. FEET
DESIGN TEMPERATURE	160 °F
DESIGN PRESSURE	150 PSI
EMPTY WEIGHT	~690 LBS.
FULL WEIGHT	~1,450 LBS.

NOTES:

- PLEASE ALLOW ~20" ADDITIONAL TO INSTALL AND REMOVE THE PISTON ASSEMBLY TO THE BACKSIDE OF THE FILTER.

NOZZLE	CONNECTION	TYPE	SIZE	RATING	TOLERANCES (UNLESS OTHERWISE SPECIFIED)	 2672 S. LA CIENEGA BLVD. LOS ANGELES, CA 90034 MAIN: (310) 839-2828 FAX: (310) 839-6878
A1	SERVICE PORT	FLANGED	3.5" ASA	CL. #150 F.F. w/ Blind	FRAC. ±1/16	
A2	PRESSURE RELEASE	THREADED	1" NPT(2)		ANGLE ±1°	
K1	HIGH PRESSURE CONN.	THREADED	1/4" NPT(2)		FRAC. ±1/16	<b>MATERIAL:</b> SST
K2	LOW PRESSURE CONN.	THREADED	1/4" NPT(2)		.X ±.1	
K3	HYDRAULIC CONN.	THREADED	1/4" NPT(2)		.XX ±.05	<b>DRAWN BY:</b> S. PERKINSON
N1	INLET	FLANGED	12" ASA	CLASS #150 F.F.S.O.	.XXX ±.010	
N2	OUTLET	FLANGED	12" ASA	CLASS #150 F.F.S.O.		<b>DATE:</b> 07/06/11
N3	FLUSH OUTLET	THREADED	2" NPT			
						<b>TITLE:</b> ABW12-P FILTER, CUT DRAWING
						<b>SCALE:</b> 1:18
						<b>SHEET:</b> 1 OF 1
						<b>REV</b> ABW-12P-CUT-01 2